

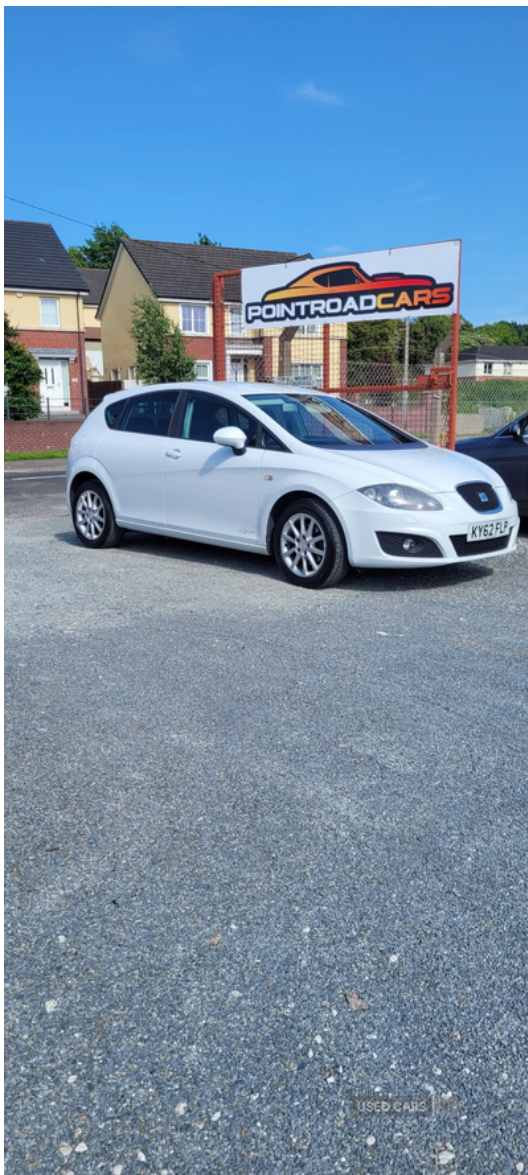


Point road cars: 07342933567

Seat Leon 1.6 TDI CR SE Copa 5dr | Sep 2012

NEW CLUTCH JUST FITTED. TIMING BELT DONE

£4,995



Miles:	90000
Fuel Type:	Diesel
Transmission:	Manual
Colour:	White
Engine Size:	1598
CO2 Emission:	109
Tax Band:	B (£20 p/a)
Body Style:	Hatchback
Insurance group:	15E
Reg:	KY62FLP

Technical Specs

DIMENSIONS	
Length:	4315mm
Width:	1768mm
Height:	1455mm
Seats:	5
Luggage Capacity (Seats Up):	341L
Gross Weight:	1820KG
Max. Loading Weight:	495KG

PERFORMANCE & ECONOMY	
Fuel Consum. (Urban Cold):	55.4MPG
Fuel Consum. (Extra Urban):	76.3MPG
Fuel Consum. (Combined):	67.3MPG
Fuel Tank Capacity:	55L
Number Of Gears:	5 SPEED
Top Speed:	115MPH
Acceleration 0-100 km/h:	11.3s
Engine Power BHP:	103.3BHP

2012

SEAT LEON 1.6TDI
90k Miles
New Clutch Just Fitted
Just Had Full Service
TIMING BELT Recently Done
Full Service History
Low Insurance Group
Low Tax Bracket
Alloy Wheels With Good Tyres
Mot Till June 2026
SAT NAV
DAB STEREO
Privacy Glass
Parking Sensors

3 MONTHS WARRANTY

We Accept All Major Cards

£4995

Tel 0 7 3 4 2 9 3 3 5 6 7

Vehicle Features

'Lights On' warning buzzer, 2 rear cupholders, 3 Button folding key with remote window opening/closing function, 3 point rear seatbelts x3, 8 speakers, 12V power point front, ABS + TCS (with TCS deactivation), Active head restraints, Auto-lock/unlock doors, Auxiliary input socket, Bi-Xenon headlights + adaptive front lighting system/headlight washers + daytime running lights + LED tail lights, Bluetooth handsfree phone connection with steering wheel mounted controls, Body colour door handles, Body coloured bumpers, Body coloured door mirrors, Boot open warning light, Boot storage net, Child proof door locks, Chromed centre radiator grille surround, Combined ipod/USB connection, Coming home headlight function, Convenience pack - Leon, Cornering front fog lights, Cruise control, Curtain airbags, Dark green tinted rear windows, Diesel particulate filter, Digital clock and outside temperature display, Driver/Front Passenger airbags, Driver seat height/lumbar adjust, Dual zone climate control, Dust/pollen filter, Dynamic steering response (DSR), Electric adjustable/heated/folding door mirrors, Electric front/rear windows with one touch/anti pinch, Electric headlamp adjustment, Electro - mechanical power assisted steering, ESP + EBA (with ESP deactivation), Fasten seatbelt reminder, Front + rear carpet mats, Front adjustable head restraints, Front and rear courtesy lights with delay, Front cupholder, Front map reading lights, Front seatbelt pretensioners, Front side airbags, Height/reach adjust steering wheel, Height adj front seatbelts/belt force limiters, Hill hold control, Honeycomb front grille, Illuminated boot, Illuminated glovebox, Immobiliser, Isofix child seat preparation, Leather steering wheel and gear knob, Locking wheel bolts, Low fuel warning light, Multi function display, Passenger airbag deactivation system, Passenger seat back pocket, Passenger seat height adjuster, Passenger seat lumbar adjust, Radio/CD + MP3, Rear head restraints, Rear reading lights, Rear wash/wipe, Remote central locking + deadlocks, Remote fuel flap release, SEAT logo boot release, Seat media pack - Leon, Second remote key, Service interval indicator, Split folding rear seat, Steering wheel mounted audio controls, Storage under front passenger seat, Sunvisors with illuminated vanity mirrors (drivers with covered mirror + card holder), Tinted windows, Trip computer, Tyre pressure monitoring system, Tyre repair kit, Volumetric alarm with back up horn, White instrument lighting with brightness control