

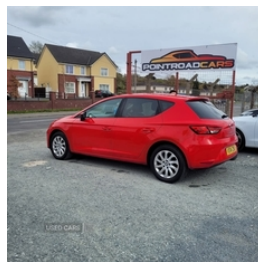


Point road cars : 07342933567

Seat Leon 1.6 TDI SE 5dr | Jun 2014

TIMING BELT & WATER PUMP DONE

£4,995



Miles:	108000
Fuel Type:	Diesel
Transmission:	Manual
Colour:	Red
Engine Size:	1598
CO2 Emission:	99
Tax Band:	A (£20 p/a)
Body Style:	Hatchback
Insurance group:	14E
Reg:	KS14ZNU

Technical Specs

DIMENSIONS	
Length:	4263mm
Width:	1816mm
Height:	1459mm
Seats:	5
Luggage Capacity (Seats Up):	380L
Gross Weight:	1820KG
Max. Loading Weight:	609KG

PERFORMANCE & ECONOMY	
Fuel Consum. (Urban Cold):	61.4MPG
Fuel Consum. (Extra Urban):	85.6MPG
Fuel Consum. (Combined):	74.3MPG
Fuel Tank Capacity:	50L
Number Of Gears:	5 SPEED
Top Speed:	119MPH
Acceleration 0-100 km/h:	10.7s
Engine Power BHP:	103.3BHP

2014

FINANCE AVAILABLE

SEAT LEON 1.6TDI
108K MILES
TIMING BELT & WATER PUMP JUST FITTED
JUST HAD FULL SERVICE
RED 5DR
MOT TILL MAY 2026
ALLOY WHEELS WITH DECENT TYRES
LOW TAX BRACKET
LOW INSURANCE GROUP
PRIVACY GLASS IN REAR

3 MONTHS WARRANTY

IDEAL CAR FOR 1ST TIME DRIVERS.

WE CAN DELIVER THE CAR IF NEEDED

WE ACCEPT ALL MAJOR CARDS

£4995

TEL 0 7 3 4 2 9 3 3 5 6 7

Vehicle Features

'Lights On' warning buzzer, 3 height adjustable rear headrests, 3 point rear seatbelts x3, 12v power point in centre console, ABS + traction control, Active head restraints, Additional heating and ventilation outlet in rear of centre console, Ambient lighting, Auxiliary input socket, Bluetooth audio streaming, Bluetooth

handsfree phone connection with steering wheel mounted controls, Body colour door handles, Body coloured bumpers, Body coloured door mirrors, Child proof door locks, Chromed centre radiator grille surround, Chrome interior trim, Comfort suspension, Coming home headlight function, Cornering front fog lights, Curtain airbags, Digital clock and outside temperature display, Driver/Front Passenger airbags, Driver/passenger sunvisors with illuminated vanity mirrors, Driver seat height/lumbar adjust, Drivers knee airbag, Dust/pollen filter, Electrically adjustable door mirrors, Electric front/rear windows with one touch/anti pinch, Electric headlamp adjustment, Engine immobiliser, ESP+EBA, Footwell illumination, Front/rear floor mats, Front adjustable head restraints, Front armrest with storage box, Front cupholders x 2, Front map reading lights, Front seatback pockets, Front seatbelt pretensioners, Front side airbags, Heated door mirrors, Height/reach adjust steering wheel, Hill hold control, Illuminated boot, Illuminated glovebox, Leather handbrake, Leather steering wheel and gear knob, LED indicators in door mirrors, Locking wheel bolts, Low fuel warning light, Luggage tie-down hooks, Multi function display, Passenger airbag deactivation system, Passenger seat height adjuster, Radio/CD + MP3, Rear reading lights, Rear top tether child seat ISOFIX attachment, Rear wash/wipe, Remote central locking + deadlocks, Remote fuel flap release, SD card slot, Seatbelt warning, SEAT logo boot release, Second remote key, Service interval indicator, Speed sensitive power steering, Split folding rear seat, Steering wheel mounted audio/phone controls, Tinted windows, Touch screen display, Trip computer, Tyre pressure monitoring system, USB port, Volumetric alarm with back up horn, XDS electronic differential lock